

BLUE WATERS

SUSTAINED PETASCALE COMPUTING

May 21, 2013

Blue Waters New User Workshop



GREAT LAKES CONSORTIUM
FOR PETASCALE COMPUTATION

CRAY®

Welcome

- This is our first, general user workshop. Prior workshops targeted NSF PRAC teams.
- For more information on other allocated projects see the portal page on Science Teams at:
 - <https://bluwaters.ncsa.illinois.edu/science-teams>
- Slides will be available from the portal at:
 - <https://bluwaters.ncsa.illinois.edu/user-workshop-may-13>
- We will do our best to respond to questions from WebEx participants.
- Please sign up for the optional tour of the NPCF building during today's afternoon hands-on session.

Administrative

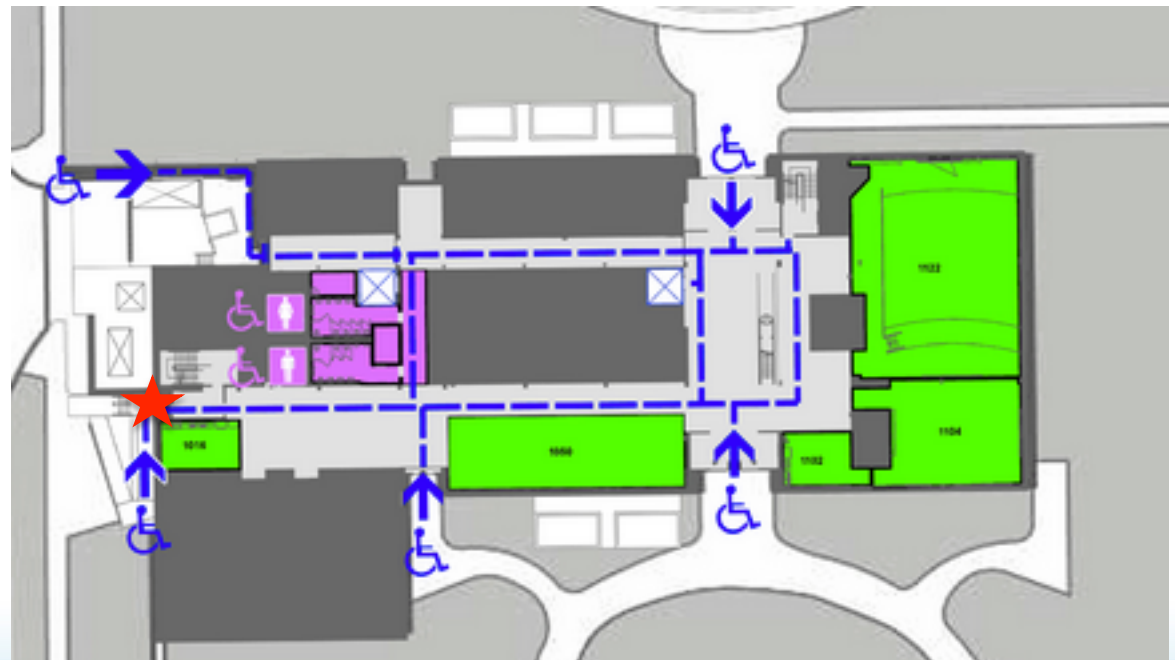
- Wireless access
 - Select UIPublicWiFi SSID and then open a web browser and go to a web site. Accept terms of use.
 - Most common ports are not blocked.
- If access is an issue we can get some guest accounts.



Protocol name	Purpose	Port range
SSH, SCP, SFTP	Secure shell and secure file transfer	22/tcp
Mail (SMTP)	Sending email (although not through on-campus mail servers)	25/tcp
HTTP	Web pages	80/tcp
POP3	Email (not secure)	110/tcp
NTP	Clock synchronizing	123/tcp and udp
IMAP	Email (not secure)	143/tcp
HTTPS	Secure web pages	443/tcp
Secure SMTP	Sending email	465/tcp
IPSEC	VPN clients	500/udp
LPR	Printing	515/tcp
Submission	Sending email	587/tcp
IPP	Internet Printing Protocol	631/tcp
Secure IMAP	Secure email	993/tcp
Secure POP	Secure email	995/tcp
MSN	MSN Instant Messenger	1863/tcp
RDP	Windows Remote Desktop	3389/tcp
AIM	AOL Instant Messenger	5190/tcp
Alternate HTTP	Web pages	8080/tcp

Emergencies

- In case of a weather emergency proceed to the stairwell at this end of the building.



Overlap with the PRAC Symposium

- We apologize for the overlap this morning.
- If you are interested in some of the PRAC presentations, please feel free to head over to the auditorium.

About the Presenters

- Material prepared and/or presented by members of the following groups
- Science and Engineering Application Support (SEAS)
- Visualization
- Storage